

# ARMSTRONG RESERVE

Native trees such as *Hymenosporum flavum* and *Eucalyptus caesia* under planted with shrubs and groundcovers

Copses of small deciduous trees such as *Acer palmatum* to filter views to Reserve

Existing trees to be retained

Planter above (Refer to First Floor Plan)

CAR PARKING

Chinese Elm proposed street trees

Manchurian Pear to courtyards

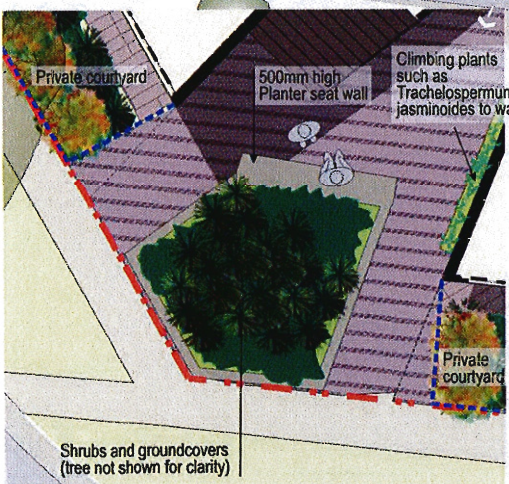
Planter above (Refer to First Floor Plan)

Existing Cherry be removed and replaced with Chinese Elm

Existing Cherry be removed and replaced with Chinese Elm

Planting of Manchurian Pear along south boundary

Copse of Japanese Maple



LATROBE STREET - PAINE STREET ENTRY - NOT TO SCALE

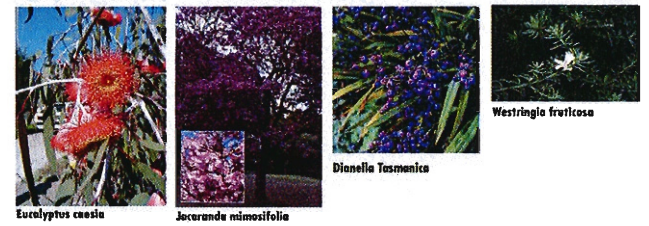
## LEGEND

- EXISTING TREES RETAINED
- EXISTING TREES REMOVED
- PROPOSED TREES
- PROPOSED SHRUBS
- PROPOSED GROUNDCOVER
- LAWN
- PAVING TO ARCHITECT'S DETAIL
- SITE BOUNDARY
- FENCING
- BUILDING OVER

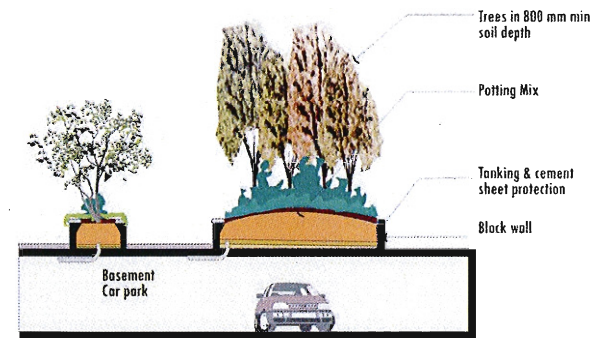
## INDICATIVE PLANTING SCHEDULE

BOTANICAL NAME	COMMON NAME	HEIGHT	SPREAD
<b>Evergreen Trees</b>			
<i>Eucalyptus caesia</i>	Gungahra	3-6m	6-9m
<i>Homalium populifolius</i>	Bleeding Heart	3-5m	2-5m
<i>Hymenosporum flavum</i>	Native Frangipani	5-8m	2-4m
<i>Tristanopsis laurina</i>	Water Gum	8-10m	4-5m
<b>Deciduous Trees</b>			
<i>Acer palmatum cv.</i>	Japanese Maple	3-6m	3-6m
<i>Jacaranda mimosifolia</i>	Jacaranda	8-12m	8-12m
<i>Lagerstroemia indica</i>	Crape Myrtle	8-10m	5-6m
<i>Malus ioensis 'Plena'</i>	Crab Apple	4-6m	4-6m
<i>Pyrus ussuriensis</i>	Manchurian Pear	6-7m	7-9m
<i>Robinia pseudoacacia Frisia</i>	Hop Top Robinia	8-12m	4-6m
<i>Ulmus parvifolia</i>	Chinese Elm	8-10m	6-8m
<b>Shrubs</b>			
<i>Camelia sasanqua (hedge)</i>	Camelia	2-3m	323m
<i>Callistemon 'Little John'</i>	Bottlebrush cultivar	1m	1m
<i>Correa alba</i>	White Correa	0.8-1.2m	0.8-1.2m
<i>Lonicera nitida (hedge)</i>	Box-leaved Honeysuckle	1.5-2.5m	1-2m
<i>Murraya paniculata (hedge)</i>	Orange Jessamine	1-2m	1-2m
<i>Magnolia 'Little Gem'</i>	Magnolia	1-3m	1-2m
<i>Melaleuca thymifolia 'White Lace'</i>	Melaleuca	1m	1m
<i>Plumbago auriculata (hedge)</i>	Leadwort / Cape Plumbago	2-3m	2-3m
<i>Viburnum tinus (hedge)</i>	Viburnum	2-4m	2-4m
<i>Westringia fruticosa</i>	Coast Rosemary	1.5-2.5m	1.5-2.5m
<b>GROUNDCOVER</b>			
<i>Brachycome multifida v multifida</i>	Cut Leaf Daisy	0.2-0.4m	0.5-0.7m
<i>Clivea miniata</i>	Kaffir Lily	0.5-1m	0.5-1m
<i>Chrysocephalum apiculatum</i>	Common Everlasting	0.1-0.3m	0.5-1m
<i>Correa 'Dusky Bells'</i>	Hybrid Correa	0.8-1.2m	0.8-1.2m
<i>Dianella revoluta</i>	Black-anther Flax Lily	0.5-1m	0.5-1m
<i>Lomandra longifolia</i>	Spiny-headed Mat-lily	0.5-1m	0.8-1.2m
<b>Climbers</b>			
<i>Clematis aristata</i>	Australian Clematis		
<i>Pandorea jasminoides</i>	Pandorea		
<i>Trachelospermum jasminoides</i>	Star Jasmine		

## PLANT IMAGES



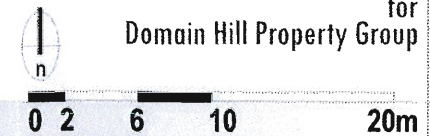
## PLANTER DETAIL (BLOCK WALL)



## GROUND FLOOR PLAN

Drawing No. LS4

**6 Paine Street, Newport**  
Landscape Concept Plan for  
Domain Hill Property Group



Landscape Architecture & Urban Design  
Level 3, Tower 3  
World Trade Centre  
18-38 Siddley Street  
Docklands Vic 3005  
Telephone (03) 9696 8011  
Facsimile (03) 9696 8022  
PROJECT NO. 0127959  
April 2012

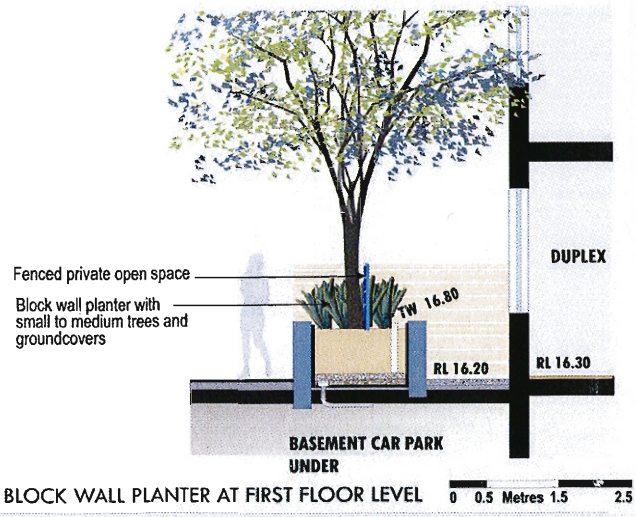
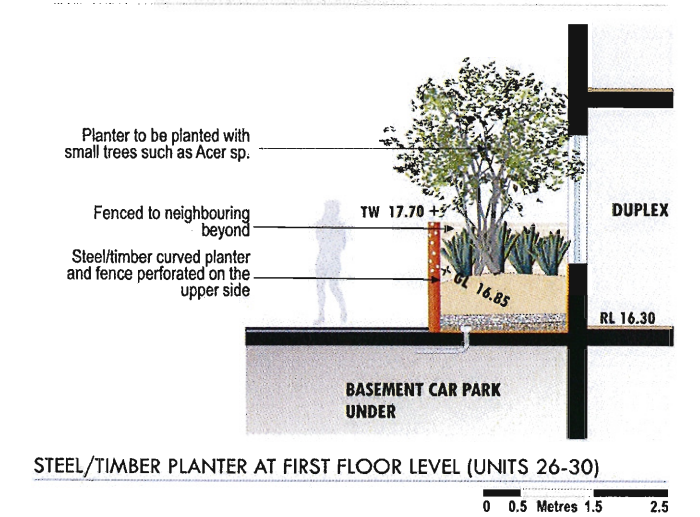
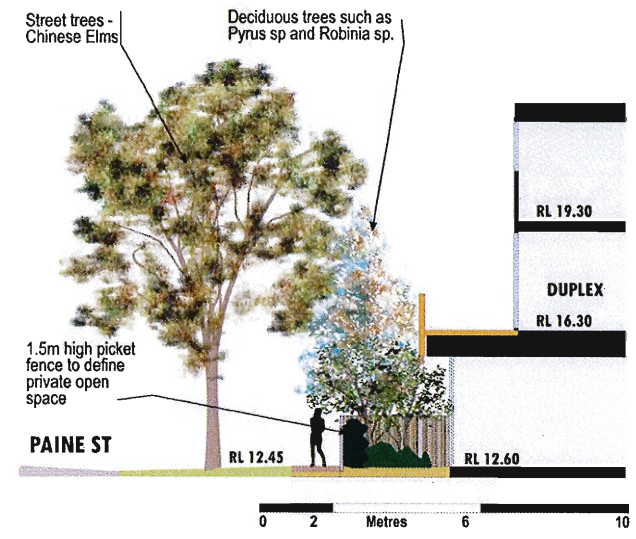
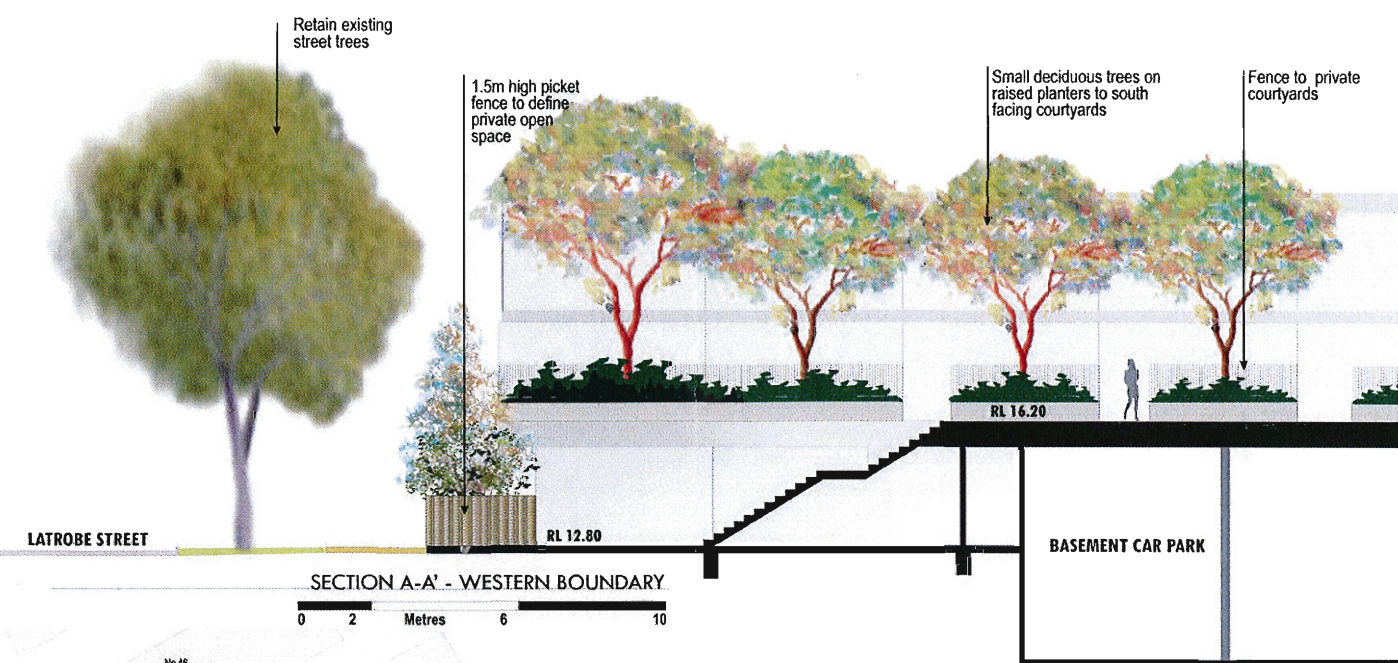


Revisions	Date	Issue	Comments
-	18 Apr 2012	Preliminary	For client/Architect's comment
-	27 Apr 2012	-	-

Drawn / Checked AC/AW	Drawing No LS4	Revision No
--------------------------	-------------------	-------------

**ARMSTRONG RESERVE**



**LEGEND**

	EXISTING TREES RETAINED		LAWN		BALCONY
	EXISTING TREES REMOVED		PAVING TO ARCHITECT'S DETAIL		BLOCK WALL PLANTER
	PROPOSED TREES		SITE BOUNDARY		STEEL/TIMBER PLANTER
	PROPOSED SHRUBS		FENCING (FIRST FLOOR)		
	PROPOSED GROUNDCOVER		BUILDING OVER		

Revisions	Date	Issue	Comments
-	18 Apr 2012	-	-
-	27 Apr 2012	-	-

Drawn / Checked AC/AW	Drawing No L55	Revision No
--------------------------	-------------------	-------------

**FIRST FLOOR PLAN** Drawing No. L55

**6 Paine Street, Newport**  
Landscape Concept Plan for  
Domain Hill Property Group

Landscape Architecture & Urban Design  
Level 3, Tower 3  
World Trade Centre  
18-38 Siddley Street  
Docklands Vic 3005  
Telephone (03) 9696 8011  
Facsimile (03) 9696 8022

PROJECT NO. 0127959  
April 2012

**ERM**  
ENVIRONMENTAL RESOURCES MANAGEMENT AUSTRALIA PTY LTD

Scale: 0 2 6 10 20m